

Newbury Black Knight Spirit Wear Collection 2018-19

Send order form with payment to NBKP. Attn: NBKP 14775 Auburn Rd, Newbury, OH 44065 —calls will be made for deliveries or pick up.



1. Sharkbite polo. New snag resistant 100% dry-Excel™ polyester fabric with high mechanical stretch. Dry-Excel™ micro-mesh inserts for ventilation. Snap front angled placket. Collar band Fil type: Classic Sizes: YS-YXL, AXS-3XL \$39



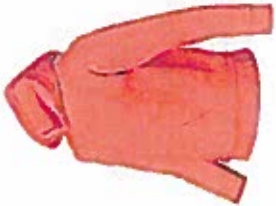
2. Wind & water-resistant Opima Taslan Nylon. Heavy 9 oz. poly/cotton blend sweatshirt fleece lining provides extra warmth—3 season versatility. Elasticized cuffs with hook & loop closure. Zippered side pockets & inside cell phone pocket. Sizes: XS-5XL \$70



3. Wind & water-resistant River Tec™ Nylon with 100% cotton flannel lining throughout for softness. Conveniently packs into its front pouch pocket for storage. Extended zipper above neck offers extra protection against wind. Half-Zip. Sizes: S-3XL \$50



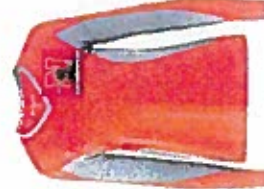
4. Pack and Go Pull-Over. Conveniently packs into its pouch pocket and is wind and weather resistant. 100% Softex Polyester. Unlined and lightweight. Half zip. Front pouch pocket and zip pocket. Adult Sizes: XS-5XL \$35



5. Cozy, no-nonsense sweat-shirt. 7.8-ounce, 50/50 cotton/poly fleece. Air feel yarn for a soft, pill-resistant finish. Two-way hood. No drawcord at hood. Front pouch pocket. Rib knit cuffs and waistband. Orange or Black with Logo. Personalization available on back. Youth Sizes: XS-XL \$25



6. Athletic color-blocking on the shoulders and sleeves, plus a comfortable cut for movement. Fade and shrink resistant.. 9-ounce, 65/35 ring spun combed cotton/poly fleece. Three-panel hood with dyed-to-match jersey lining. Front pouch pocket. Sizes: YXS-YXL and AXS-A4XL \$40



7. Dry-Excel™ wicking polyester knit fabric with high mechanical stretch inserts and collar feature Snowy Heather fabric, a polyester knit in a bold, two-color heather pattern with high mechanical stretch Ladies' V-necklineFit Type: Semi-Fit Sizes : XS- 2XL \$30



8. Women's warm, anti-pill 100% polyester fleece is two-tone dip dyed fleece features a tonal color effect. Extremely versatile to be worn year-round for all of your active, outdoor, and daily needs. Full zip with hood. Size XS- 3XL \$65



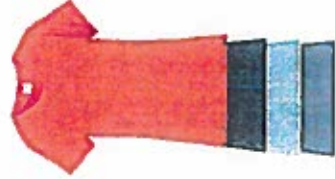
9. Athletic unisex pant is a 100% polyester brushed tricot with a peached finish. Elasticized drawstring waist. Side pockets. Zippered bottom hem. Fil type: Classic. * Sizes: YS-YXL, AS-A3XL \$32



10. Ladies 5.3-ounce, 100% cotton (preshrunk). Taped neck and shoulders. Mitered 1/2" v-neck collar. Side seamed with cap sleeves. Sport Grey or black. 90/10 cotton/poly. Logo on front, back printing available. Sizes: AXS-A2XL \$13



11. Ladies 100% polyester moisture wicking fabric for all season comfort, odor resistant and stain release fabric for easy care. Tagless V-neck available in heather gray or black with logo choice. Ladies AXS-A2XL \$30



12. 4.5-ounce, 100% ring spun cotton. Ladies Fashion Fit and girls sizes available. Logo on front, back printing available. Colors available include orange, black, dark heather gray, charcoal. Light athletic heather. Sizes: Ladies AXS-A2XL \$15

13. Girls XS-L \$15



14. Champion full Athletic fit mesh shorts . 100% polyester mesh, 100% polyester tricot liner. Sizes: YS-YXL and AS-A3XL \$20



15. Comfy black and orange flannel unisex pants with drawstring and elastic waist-band. "Newbury" in orange down pant on leg. Sizes: YS-YXL and AXS-A2XL \$25



16. 50/50 Cotton/Polyester hooded in sweatshirt. Logo | standard and available gray only "while supplies last". Personalization on back available. Sizes: YS-YL and AM-A2XL \$30



17. The perfect basic t-shirt! Indicate color: orange, black, white, heather gray. Personalization or your sport choice on back available. Logo choice printed in black. Sizes: YS-YXL and AS-AXL \$12



18. Snowy Heather fabric is polyester knit with high mechanical stretch. Bold, two color heather pattern. Raglan sleeves for a greater range of motion. Classic fit. Tagless labeling for added comfort. Black Heather or Orange Heather with logo. Sizes: 18. Men's AS-4XL \$25 19. Ladies fit XS-XL \$25. 20. YS-YL \$22

Typical Youth Sizing: YXS (4), YS (6-8), YM (10-12), YL (14-16), YXL (18-20)
Adult sizing: XS (4), S (6-8), M (8-10), L (12-14), XL (16+), 2XL-4XL add \$4

Please see logo design options at www.newburyschools.org and follow tabs to Parent section then BKP or contact Donna Holden at 216-346-0664.



21. Locally made custom Newbury Knights embroidered corn hole bags. Amazing gift! Set of 8. \$38

22. This spacious cinch pack is ready for any sport or activity. Convenient side pockets keep beverages and must-haves at hand.
\$15



23. Heavyweight Oxford Nylon, water-resistant. Large main compartment with two-way zipper. Bellowed front zippered pocket. Zippered end compartments sized for holding shoes or wet storage. Adjustable/detachable padded shoulder strap. Removable hard bottom
Size: 28" x 13" x 14" \$55
Size: 21" x 11" x 12" \$40

Name _____

Phone _____

Email: _____

Check or Money Orders — Payable

to **NBKP**

Questions / contact Donna Holden

at 216-346-0664

Item	QTY	LOGO	Color	SIZE	Name on Back (\$6)	Price	Total
1 Men's Pro Polo 222408			N/A		N/A	\$39	
2. Full Zip lined jacket 9922			Orange or Black			\$70	
3. Half Zip lined pullover 9905			Orange or Black			\$50	
4. Pack and Go pullover 9904			N/A		N/A	\$35	
5. Sweatshirt 18500-B			Orange or Black			\$25	
6. Sweatshirt ST265			N/A			\$40	
7. Ladies Stellar Tshirt 222727			Orange or Black			\$30	
8. Ladies Heron Hoodie 5697			N/A			\$65	
9. Nylon Pant 229143			N/A		N/A	\$32	
10. Ladies Cotton V-neck 5V00L					N/A	\$13	
11. Ladies V-neck Dry Excel NW3381						\$30	
12. Ladies 100% cotton T-Shirt						\$15	
13. Girls 100% cotton T-Shirt						\$15	
14. Athletic Short 8731			Orange or Black		N/A	\$20	
15. Flannel Pant F19 OB2			N/A		N/A	\$25	
16. Sweatshirt (while supplies last)		I	Gray			\$30	
17. Basic T-Shirt 2000			Orange or Black			\$12	
18. Heather T-shirt 222522			Orange or Black			\$25	
19. Heather Ladies 222722			Orange or Black			\$25	
20. Heather Youth Shirt 222622			Orange or Black			\$22	
21. Custom Cornhole Bags			N/A			\$38	
22 Cinch Bag BG613			N/A		N/A	\$15	
23. Duffie Bag (lg) 229412 (sm) 229411			N/A			\$55 \$40	

For LOGO, please refer to styles available by calling or texting Donna Holden or viewing website as listed on front page.

\$

Newbury Spirit Wear Logo Options



A. Fabric Applique (Sweatshirts only)

B. Glitter Decal

C. Glitter Scroll

D. Basic Block



E.1

E.2

E.3



D.1 Love

D.2 Love

D.3 Love

D.4 Love



F. Black Knight Pride



G. Black Knights N



H. NBK Oval
(Indicate color
choice of orange
or black lettering)



I. Classic N with
Knight - available in
embroidery on
sweatshirts only
(Additional charge of
\$7 applied)

